

2. Adagio

A modern musical score for the first system of '2. Adagio'. It features a grand staff with a treble and bass clef. The music is in 3/4 time. The first two measures are mostly rests. The third measure contains a complex chordal texture with many notes. The fourth and fifth measures show a melodic line in the treble clef with a slur and a flat sign, and a bass line with a slur and a flat sign. A 'b2' marking is present above the treble clef in the fifth measure.

A handwritten musical score for the first system, starting with the word 'Adagio.' written in cursive. It shows the initial notes and rests of the piece.

A handwritten musical score for the first system, showing a close-up of the first few notes in the bass clef.

A handwritten musical score for the first system, showing a close-up of the complex chordal texture in the third measure.

A handwritten musical score for the first system, showing a close-up of the melodic line in the fourth measure.

A handwritten musical score for the first system, showing a close-up of the bass line in the fifth measure with a slur and a flat sign.

A modern musical score for the second system of '2. Adagio', starting at measure 6. It features a grand staff with a treble and bass clef. The music is in 3/4 time. The first measure has a melodic line in the treble clef with a slur and a flat sign. The second measure has a complex chordal texture. The third and fourth measures show a melodic line in the treble clef with a slur and a flat sign, and a bass line with a slur and a flat sign. A 'b2' marking is present above the treble clef in the second measure.

A handwritten musical score for the second system, showing a close-up of the melodic line in the first measure.

A handwritten musical score for the second system, showing a close-up of the complex chordal texture in the second measure.

A handwritten musical score for the second system, showing a close-up of the melodic line in the third measure.

A handwritten musical score for the second system, showing a close-up of the bass line in the fourth measure.

A modern musical score for the third system of '2. Adagio', starting at measure 10. It features a grand staff with a treble and bass clef. The music is in 3/4 time. The first measure has a complex chordal texture. The second and third measures show a melodic line in the treble clef with a slur and a flat sign, and a bass line with a slur and a flat sign. A 'b2' marking is present above the treble clef in the second measure.

A handwritten musical score for the third system, showing a close-up of the complex chordal texture in the first measure.

A handwritten musical score for the third system, showing a close-up of the melodic line in the second measure.

A handwritten musical score for the third system, showing a close-up of the bass line in the third measure.

13

Modern musical score for measures 13-15. The piece is in 3/4 time with a key signature of one sharp (F#). Measure 13 features a treble clef with a sixteenth-note triplet and a bass clef with a steady eighth-note accompaniment. Measure 14 continues the accompaniment while the treble clef has a half-note chord. Measure 15 shows a change in the bass clef accompaniment and a treble clef melody with a slur.



16

Modern musical score for measures 16-19. Measure 16 has a treble clef with a half-note chord and a bass clef with a steady eighth-note accompaniment. Measures 17-19 feature a treble clef melody with slurs and a bass clef accompaniment that changes in measure 18.



20

Modern musical score for measures 20-22. Measure 20 has a treble clef melody with a slur and a bass clef accompaniment. Measure 21 continues the treble clef melody with a slur and a bass clef accompaniment. Measure 22 features a treble clef melody with a slur and a bass clef accompaniment.



23

Modern musical score for measures 23-25. The score is in G major, 4/4 time. Measure 23 features a treble clef with a melodic line of eighth notes and a bass clef with a bass line of eighth notes. Measure 24 has a treble clef with a melodic line of eighth notes and a bass clef with a bass line of eighth notes. Measure 25 has a treble clef with a melodic line of eighth notes and a bass clef with a bass line of eighth notes. A gray box highlights the bass line in measure 24.

Manuscript snippet 1, showing the first two measures of the modern score.

Manuscript snippet 2, showing the first two measures of the modern score.

Manuscript snippet 3, showing the first two measures of the modern score.

26

Modern musical score for measures 26-28. The score is in G major, 4/4 time. Measure 26 features a treble clef with a melodic line of eighth notes and a bass clef with a bass line of eighth notes. Measure 27 has a treble clef with a melodic line of eighth notes and a bass clef with a bass line of eighth notes. Measure 28 has a treble clef with a melodic line of eighth notes and a bass clef with a bass line of eighth notes.

Manuscript snippet 4, showing the first two measures of the modern score.

Manuscript snippet 5, showing the first two measures of the modern score.

Manuscript snippet 6, showing the first two measures of the modern score.

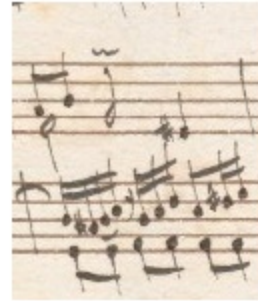
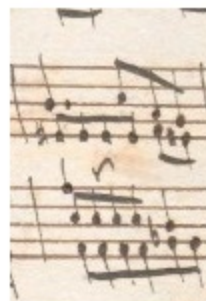
29

Modern musical score for measures 29-31. The score is in G major, 4/4 time. Measure 29 features a treble clef with a melodic line of eighth notes and a bass clef with a bass line of eighth notes. Measure 30 has a treble clef with a melodic line of eighth notes and a bass clef with a bass line of eighth notes. Measure 31 has a treble clef with a melodic line of eighth notes and a bass clef with a bass line of eighth notes. A gray box highlights the bass line in measure 29.

Manuscript snippet 7, showing the first two measures of the modern score.

Manuscript snippet 8, showing the first two measures of the modern score.

Manuscript snippet 9, showing the first two measures of the modern score.



* Die Position der Schleifer (eine Sekunde unter der Hauptnote) entspricht der Lesart der Quellen. Offenbar ist eine Verschmelzung mit dem Ornament der Hauptnote beabsichtigt.