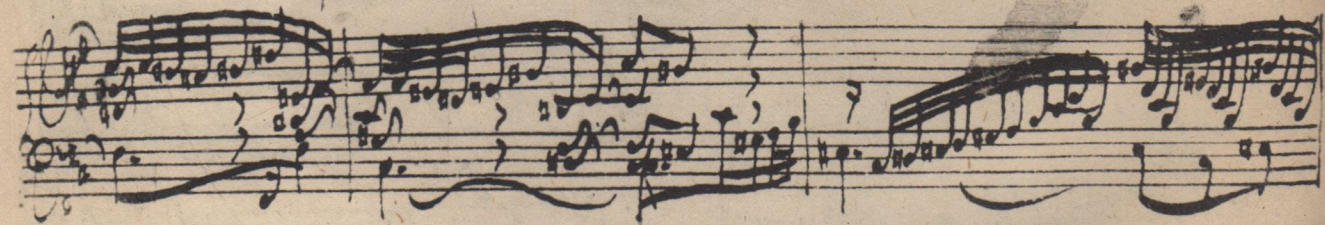


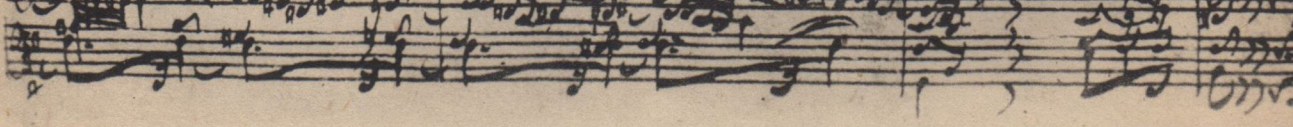
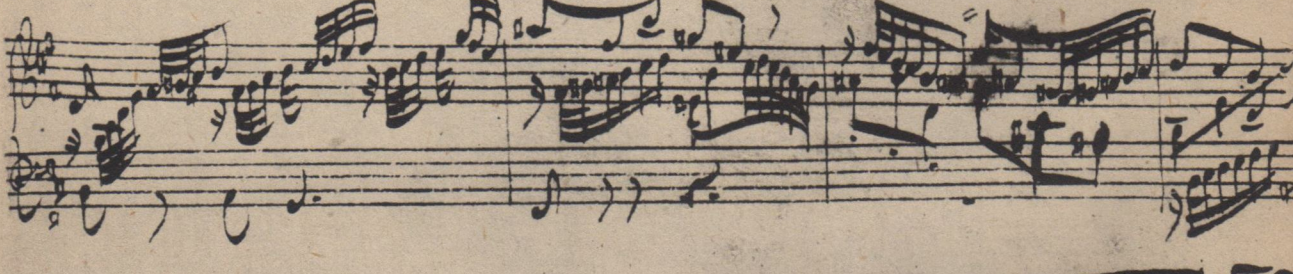
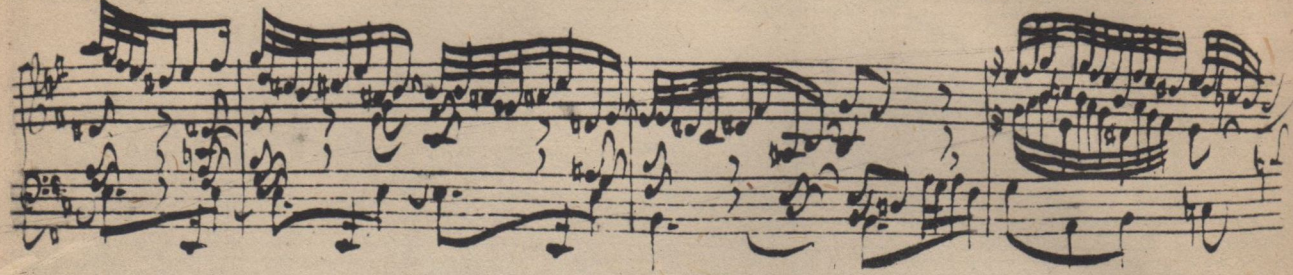
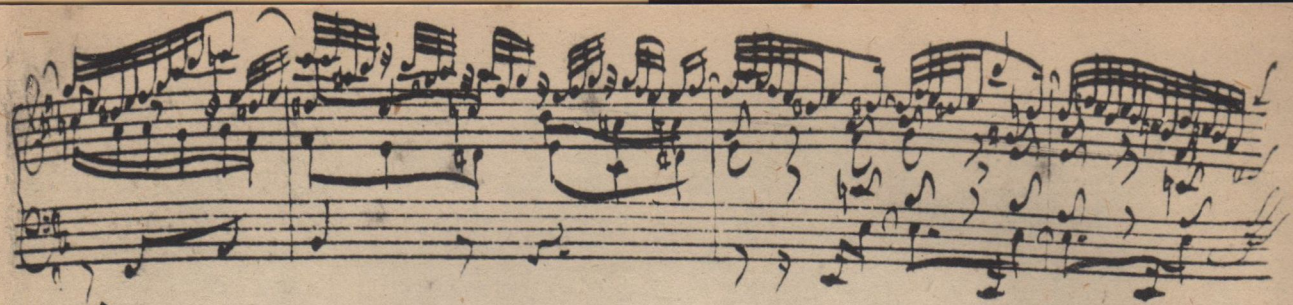
Præludium in Organo pleno pedale & Joh: Seb: Bach

This image shows a handwritten musical score for a prelude in organ plenum, pedal, and organ. The score is written on seven systems of two staves each. The top staff of each system is in treble clef, and the bottom staff is in bass clef. The music is written in a single system, with a key signature of one sharp (F#) and a common time signature (C). The notation includes various rhythmic values, including eighth and sixteenth notes, and rests. The piece is characterized by its intricate texture, with the organ plenum and organ parts providing a complex harmonic and rhythmic foundation for the pedal line. The handwriting is clear and legible, typical of 18th-century manuscript notation.



Volklied





Fuga

The first system of the fugue consists of two staves. The upper staff begins with a treble clef and a key signature of one sharp (F#). The lower staff begins with a bass clef and a key signature of one sharp (F#). The music is written in a complex, contrapuntal style, featuring multiple voices with intricate rhythmic patterns and frequent beaming.

The second system continues the fugue with two staves. The notation is dense and features a variety of rhythmic values, including eighth and sixteenth notes, often beamed together. The piece maintains its complex, multi-voiced texture throughout.

The third system of the fugue is composed of two staves. The music continues with intricate counterpoint, showing the characteristic interweaving of voices typical of a fugue. The notation is highly detailed, with many beamed notes and complex rhythmic structures.

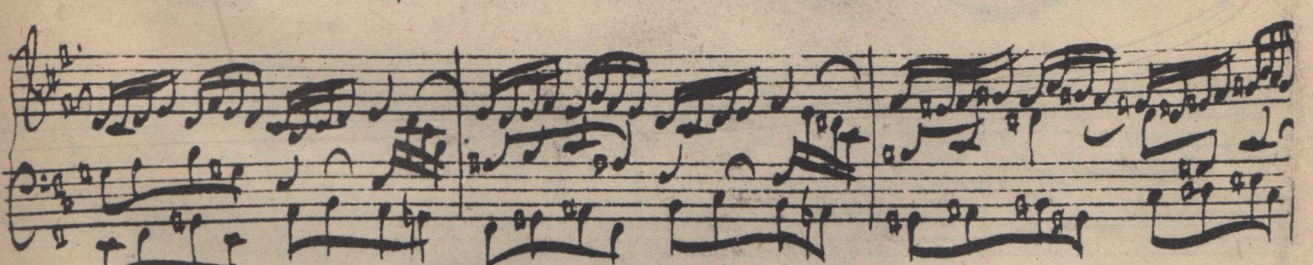
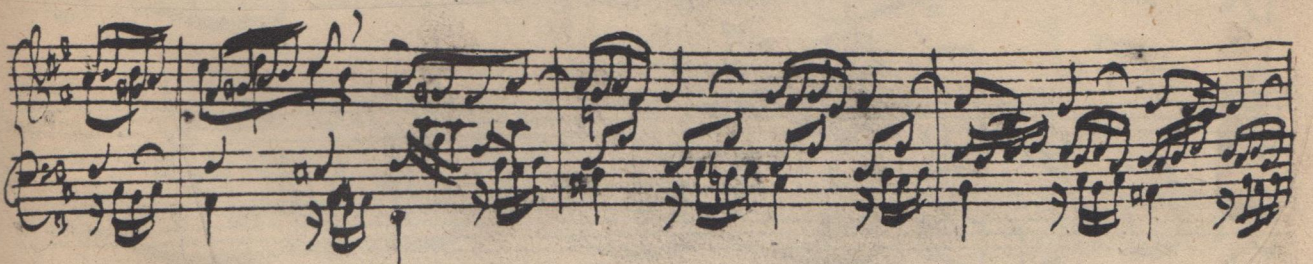
The fourth system consists of two staves of handwritten musical notation. The piece continues with its characteristic complex texture, featuring multiple voices and intricate rhythmic patterns. The notation is dense and shows a high level of technical skill.

The fifth system of the fugue is written on two staves. The music continues with its characteristic complex, multi-voiced texture. The notation is dense and features a variety of rhythmic values, including eighth and sixteenth notes, often beamed together.

The sixth system of the fugue consists of two staves. The music continues with its characteristic complex texture, featuring multiple voices and intricate rhythmic patterns. The notation is dense and shows a high level of technical skill.

The seventh and final system of the fugue on this page consists of two staves. The music concludes with a final cadence, maintaining the complex, multi-voiced texture characteristic of the piece. The notation is dense and features a variety of rhythmic values, including eighth and sixteenth notes, often beamed together.





Handwritten musical notation on a five-line staff, featuring a treble clef and a key signature of one flat. The notation includes various note values, rests, and bar lines.

Handwritten musical notation on a five-line staff, continuing the piece with complex rhythmic patterns and some slurs.

Handwritten musical notation on a five-line staff, showing a continuation of the melodic and harmonic development.

Handwritten musical notation on a five-line staff, featuring a series of sixteenth-note passages.

Handwritten musical notation on a five-line staff, with some notes beamed together and a clear bar line.

Handwritten musical notation on a five-line staff, showing a continuation of the piece with various note values.

Handwritten musical notation on a five-line staff, concluding the piece with a double bar line and the word "Fine" written in cursive.